



CPC LLC
5250 Linwood Rd.
Placida, FL 33946



www.hollowcore.net
P (941) 698 4180
F (941) 698 8888

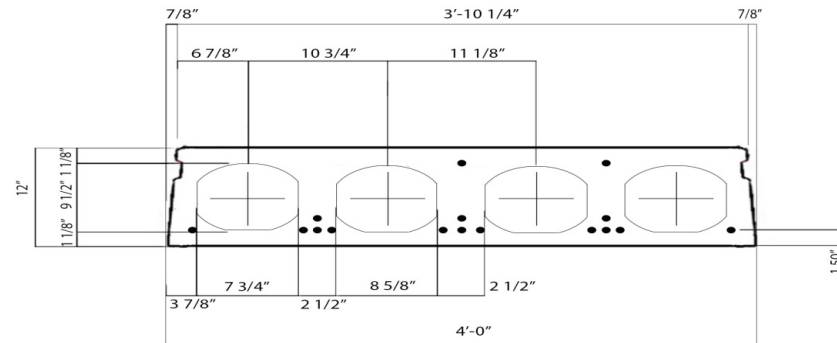


12" x 4'-0" Hollowcore Slab No Topping

ASTM 416 7 Wire LoLax 270 KSI	Strand Area in ²	φM _N in ft-kips per Unit	Simple Span (ft)																												
			28	29	30	31	32	33	34	35	36	37	38	39	40	41	42	43	44	45	46	47	48	49	50	51	52	53	54	55	
6 1/2" Diameter	0.919	142.0	245	240	235	230	220	210	190	170	150	130	115	105	95	85	80	70	55												
8 1/2" Diameter	1.225	185.4	295	290	285	280	270	260	240	220	200	185	170	155	145	135	125	120	110	100	90	80	65	55							
10 1/2" Diameter	1.531	243.8	320	315	310	305	295	285	275	260	240	220	205	185	180	175	165	155	140	130	120	115	110	105	95	85	75	65	55	50	

CPC load tables are based on the following assumptions:

- 1- Loads are in PSF
- 2- Precast Concrete f_c = 6000 psi F
- 3- Loads are based on slabs being 100% grouted.
- 4- Allowable superimposed service loads include dead load of 20 psf.
- 5- Loads are based on ACI 318-14.
- 6- Camber is inherent to flexural prestressed members. Slabs of unequal spans or a change in span direction will result in differential camber. Call CPC Engineering Department for guidance with the design layout.
- 7- Values in shaded boxes require deflection analysis. Contact CPC Engineering Department.
- 8- Values to the left of the dark stepped lines are shear critical. Contact CPC Engineering Department.



Area	307 in ²
Thermal R Value	1.9
STC	55
IIC	38