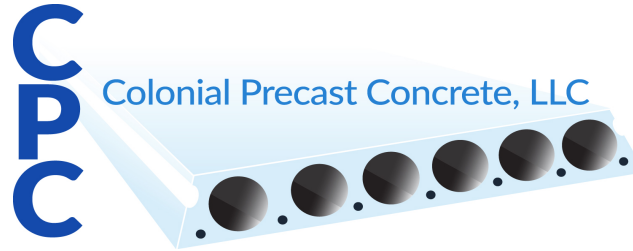




CPC LLC  
5250 Linwood Rd.  
Placida, FL 33946



[www.hollowcore.net](http://www.hollowcore.net)  
P (941) 698 4180  
F (941) 698 8888

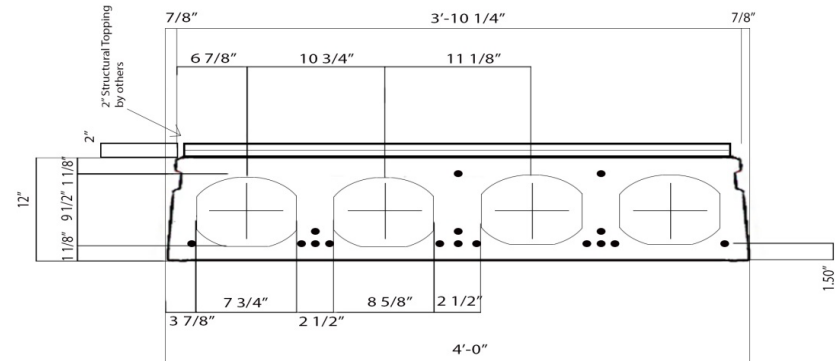


12" x 4'-0" Hollowcore Slab With 2" Structural Topping

ASTM 416 7 Wire LoLax 270 KSI	Strand Area in <sup>2</sup>	φM <sub>n</sub> in ft-kips per Unit	Simple Span (ft)																												
			28	29	30	31	32	33	34	35	36	37	38	39	40	41	42	43	44	45	46	47	48	49	50	51	52	53	54	55	
6 1/2" Diameter	0.919	168.4	265	255	245	235	225	220	200	190	165	145	125	115	105	95	85	75	65	55	50										
8 1/2" Diameter	1.225	219.9	310	305	295	290	280	270	250	230	210	195	180	165	150	140	130	125	115	105	95	85	70	60							
10 1/2" Diameter	1.531	289.1	340	335	330	320	310	300	290	275	255	235	220	205	190	180	170	160	150	140	135	125	115	110	105	95	85	70	65	55	

CPC load tables are based on the following assumptions:

- 1- Loads are in PSF
- 2- Precast Concrete f<sub>c</sub> = 6000 psi    Field Topping f<sub>c</sub> = 4000psi
- 3- Loads are based on slabs being 100% grouted.
- 4- Allowable superimposed service loads include dead load of 20 psf.
- 5- Loads are based on ACI 318-14.
- 6- Camber is inherent to flexural prestressed members. Slabs of unequal spans or a change in span direction will result in differential camber. Call CPC Engineering Department for guidance with the design layout.
- 7- Values in shaded boxes require deflection analysis. Contact CPC Engineering Department.
- 8- Values to the left of the dark stepped lines are shear critical. Contact CPC Engineering Department.
- 9- Slabs designed with composite structural topping must be properly cleaned and completely saturated before topping placement to insure adequate bond.



Area Composite	366 in <sup>2</sup>
Thermal R Value	2.1
STC	58
IIC	38

$\phi V_c$ in kips per Unit
26.6
26.6
26.6